



**SEALPROPERTIES**  
RENTAL MARKET SPECIALISTS

**9 Richmond Street  
Hartlepool  
TS25 5SH**



**2 bedroom mid terrace house available now**

Beds : 2

Bath : 1

Parking : On Street

Gas CH : Yes



0191 580 5900



[WWW.SEALPROPERTIES.CO.UK](http://WWW.SEALPROPERTIES.CO.UK)



[INFO@SEALPROPERTIES.CO.UK](mailto:INFO@SEALPROPERTIES.CO.UK)

## Contact Us

### Agent Information

**Emma**

**0191 5805900**

**emma@sealproperties.co.uk**

**167/169 Saltwell Road**

**Gateshead, NE8 4TJ**

**www.sealproperties.co.uk**



### Scan Me

Scan Me For Property Details



### Quote Me

Quote This Reference Number For More Information

**SP16120234**

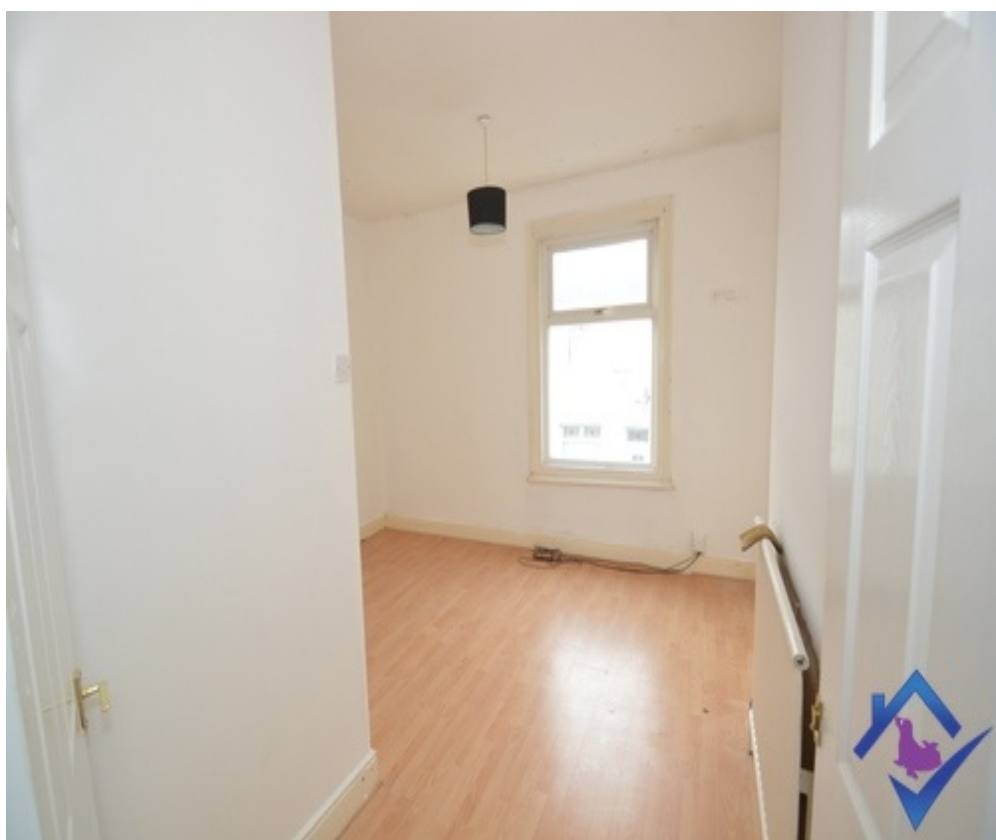
## Disclaimer

Whilst every effort is made to ensure the contents of this brochure are accurate and true, the particulars are set out as a general outline for guidance purposes only and do not constitute any part of an offer or contract. Interested Parties should not rely on them as statements of representation of fact, but instead must satisfy themselves by inspection or otherwise as to their accuracy.

A Holding Fee equivalent to one week's rent is payable. Please contact the office for more details.

Energy Performance Certificate (EPC) information is available upon request. Please contact the office.

# Gallery



## Description

**SEAL Properties welcome to the rental market this 2 bedroom mid terrace house. This property is available immediately with a number of move-in deals available. The property briefly comprises of 2 bedrooms, living room, kitchen, bathroom and a private yard to the rear.**

## Specification

### GROUND FLOOR

Entrance Hallway

*Small entrance lobby*

Living room

*Spacious Living room with wall decor and feature fire*

Kitchen

*Galley styled kitchen finished in white with a good variety of units . Tiled walls. Built in oven, hob and extractor fan.*

Bathroom

*Compact 3 piece bathroom suite in white with ceramic wall tiles. wooden vanity cupboard.*

### FIRST FLOOR

Landing

*Landing space leading to bedrooms*

Bedroom One

*A good size double bedroom*

Bedroom Two

*A single bedroom*

### OUTSIDE

Rear

*Private yard to the rear*